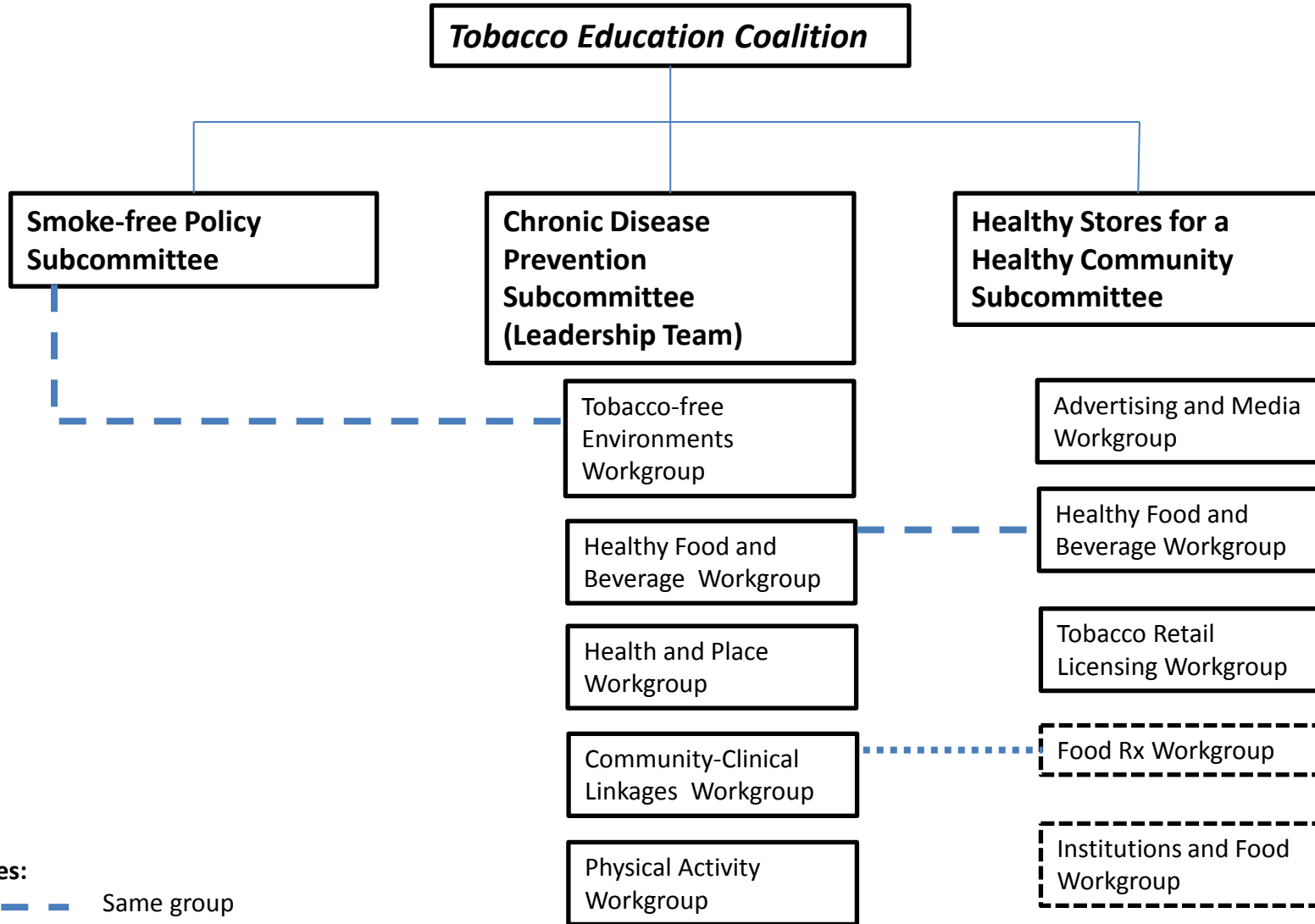


# Solano County Tobacco Education Coalition, Subcommittees, and Workgroups



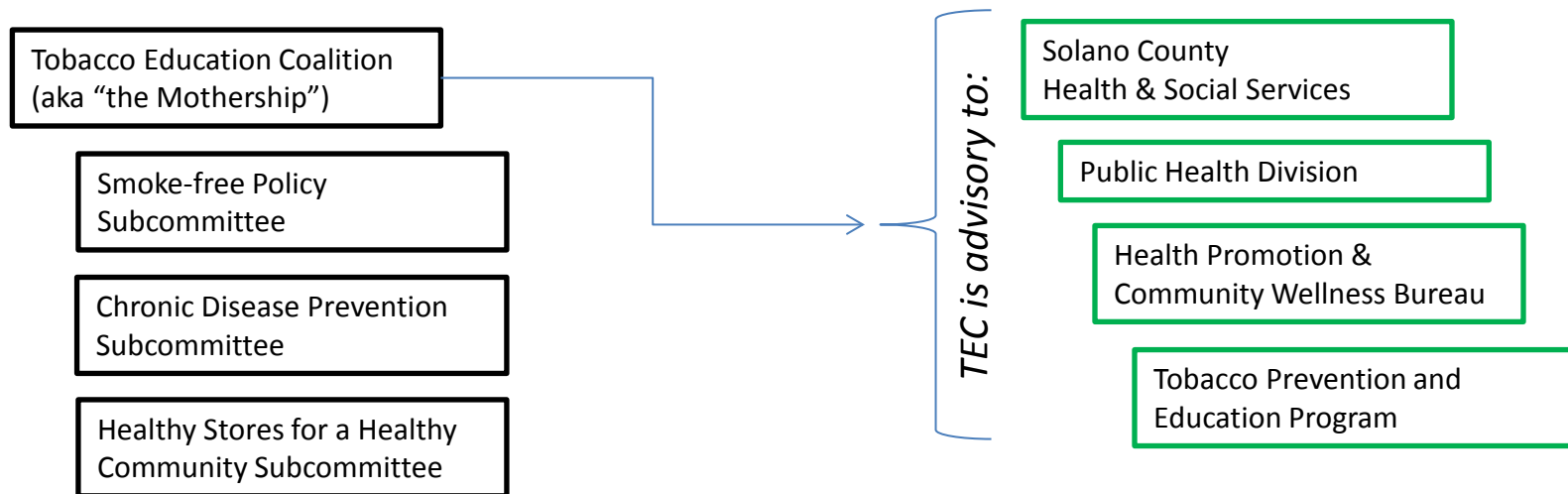
**Notes:**

— Same group

⋯ Different, but collaborating groups

⋯ Possible future work

# Solano County Tobacco Education Coalition and its Subcommittees



## Facts about the Solano County Tobacco Education Coalition (established 1990)

- Advisory to Solano County Health & Social Services
- Reasons for creating Chronic Disease Prevention Subcommittee under the TEC:
  - TEC offers a more stable funding source than grants (CTG, PICH, LWCA)
  - Any chronic disease prevention effort should link to the largest chronic disease risk factor--tobacco use and exposure
  - Chronic Disease Prevention Subcommittee benefits from TEC's policies, systems, and environments (PSE) mentoring, lessons learned, and impact
  - Subcommittee's addition of new stakeholders in transportation, Area Agency on Aging, Touro University, FANNS, etc. contributes to cross-sectoral support and collaboration